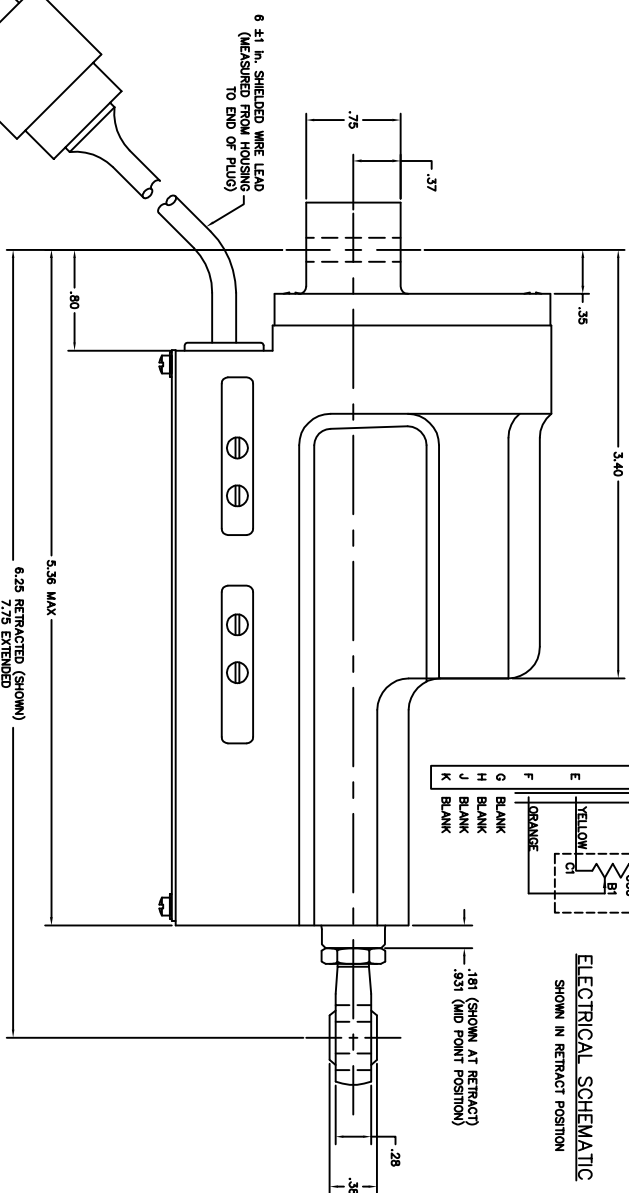
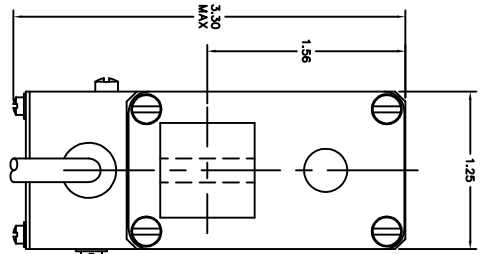
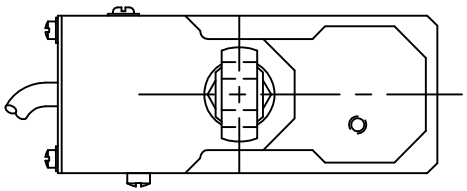
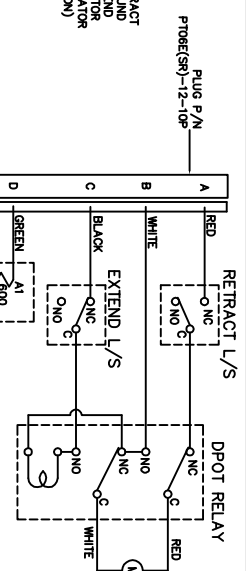


NOTICE
 This drawing is a part of the proprietary data base of the manufacturer and is not to be distributed, copied, or used in any manner without the express written permission of the manufacturer. The manufacturer assumes no responsibility for any errors or omissions in this drawing. The manufacturer reserves the right to change this drawing without notice and without obligation to update any drawings previously issued.



WIRE LEGEND:
 RED +28VDC ACTUATOR RETRACT
 WHITE -28VDC ACTUATOR EXTEND
 BLACK +28VDC ACTUATOR GROUND
 YELLOW EXTEND POSITION INDICATOR
 GREEN RETRACT POSITION INDICATOR
 ORANGE WIPER (VARIABLE POSITION)

ELECTRICAL SCHEMATIC
 SHOWN IN RETRACT POSITION



PT06E(SR)-12-10P PLUG (MATES WITH MS3472W2-10S CONNECTOR)
 6 #18 AWG SHIELDED WIRE LEAD (MEASURED FROM HOUSING TO END OF PLUG)
 R.38
 0.75
 0.190/194
 H14 ROD END WITH BORE 0.250

- NOTES CONTINUED:**
 7. VOLTAGE: 28 VDC
 8. TORQUE ADJUSTMENT: 4:20
 9. STATIC TENSION LOAD: 200 LBS. MAXIMUM OPERATIONAL LOAD: 100 LBS.
 10. MAXIMUM CURRENT: 2.0 AMPS WITH 50 LB. LOAD
 11. WEIGHT: 1.4 LBS.
 12. MAXIMUM CYCLE TIME: 70 SECONDS
 MINIMUM CYCLE TIME: 30 SECONDS
 13. STROKE LENGTH: 1.5 IN.

REVISONS		REVISION DESCRIPTION	DATE	APP'D.
ASC249B	A	MAXIMUM CYCLE TIME IS 70 SECONDS WAS 50 SECONDS ADDED NEW CONNECTOR VIEW.	12-23-02	D.S.
ASC249B	B	IS CONNECTOR ALPHA LETTERS WAS NUMBERS	4-7-03	D.S.
ASC249C	C	REPLACE 1092310-2 EYE BOLT WITH H14 ROD END. ADDED 1.81 AND 0.331 DIMENSIONAL INFORMATION. DIMENSION 6 WAS 28 AT WIRE LEADS CALLOUT.	3-17-05	D.S.

REV	DATE	DESCRIPTION	LIST OF MATERIALS	DATE	REVISIONS
01					
02					
03					
04					
05					
06					
07					
08					
09					
10					
11					
12					
13					
14					
15					
16					
17					
18					
19					
20					
21					
22					
23					
24					
25					
26					
27					
28					
29					
30					
31					
32					
33					
34					
35					
36					
37					
38					
39					
40					
41					
42					
43					
44					
45					
46					
47					
48					
49					
50					
51					
52					
53					
54					
55					
56					
57					
58					
59					
60					
61					
62					
63					
64					
65					
66					
67					
68					
69					
70					
71					
72					
73					
74					
75					
76					
77					
78					
79					
80					
81					
82					
83					
84					
85					
86					
87					
88					
89					
90					
91					
92					
93					
94					
95					
96					
97					
98					
99					
100					

ACTUATOR ASSEMBLY OUTLINE
 2007-0010
 SCALE: 2:1
 UNIT: IN
 SHEET 1 OF 1